

♩=83

Yossi Green

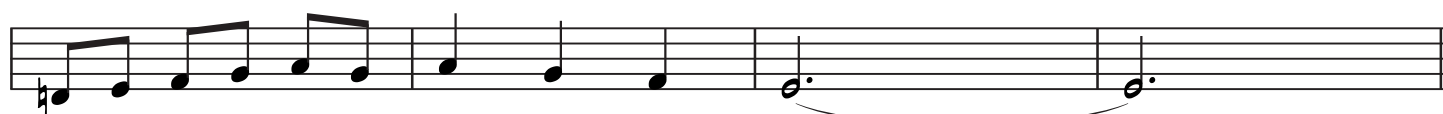
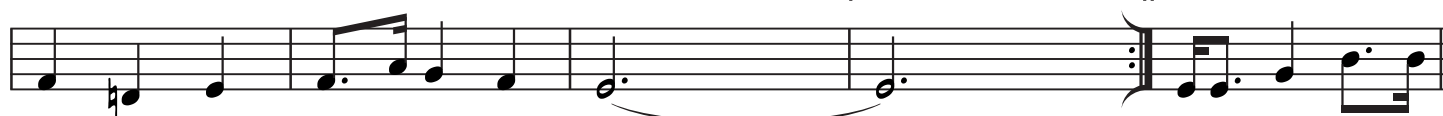
BALLAD

Selach Luni

As Performed By 'Yiddish Nachas'

INTROB \flat 7E \flat miB \flat 7E \flat miB \flat 7E \flat miB \flat 7A \flat miE \flat miE \flat mi

F7

E \flat miB \flat 7C \flat B \flat 7C \flat 7B \flat 7A \flat miA \circ 7B \flat 7E \flat miB \flat A \flat miC \flat E \flat miE \flat miB \flat 7C \flat B \flat B \flat A \flat miB \flat 7A \flat mi 6 B \flat 7B \flat 7B \flat 7E \flat mi1. E \flat mi2. E \flat mi

Contd/....



B

C^b G^b/B^b A^bmi E^bmi

G^b C^b G^b/B^b A^bmi

A^bmi $Fmi^{7(b5)}$ B^bmi $1.^E^bmi$

A^bmi A^bmi E^bmi E^bmi

$2.^E^bmi$ A^bmi B^b7 E^bmi

C

B^b7 E^bmi D^b7 G^b

A^bmi E^bmi/G^b $1.^B^b7/F$ C^b B^b

$2.^B^b7$ B^b7 E^bmi

